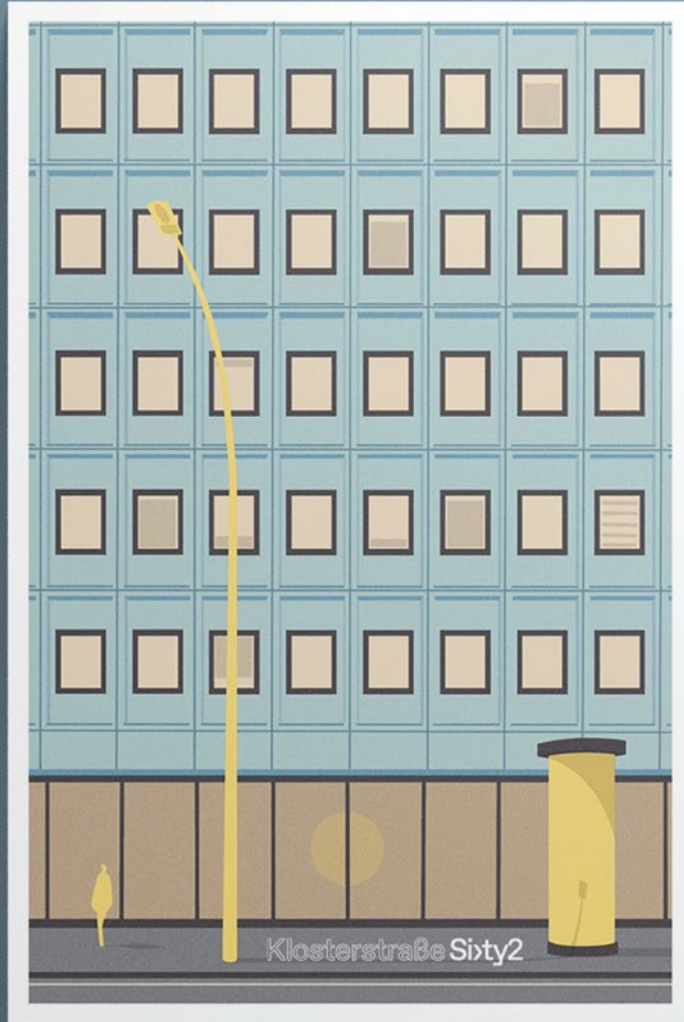


Klosterstraße  
Sixty2

RETHINK  
THE PLATTE





A Project by

**TROCKLAND®**

**CREATING  
UNIQUE  
SPACES  
WITH LOVE**

# CONTENT

NEXT  
GENERATION  
WORK & LIFE  
LOCATION

01

AMIDST  
BERLIN-MITTE

02

MAKEOVER  
OF  
MODERNITY

03

SPACES

04



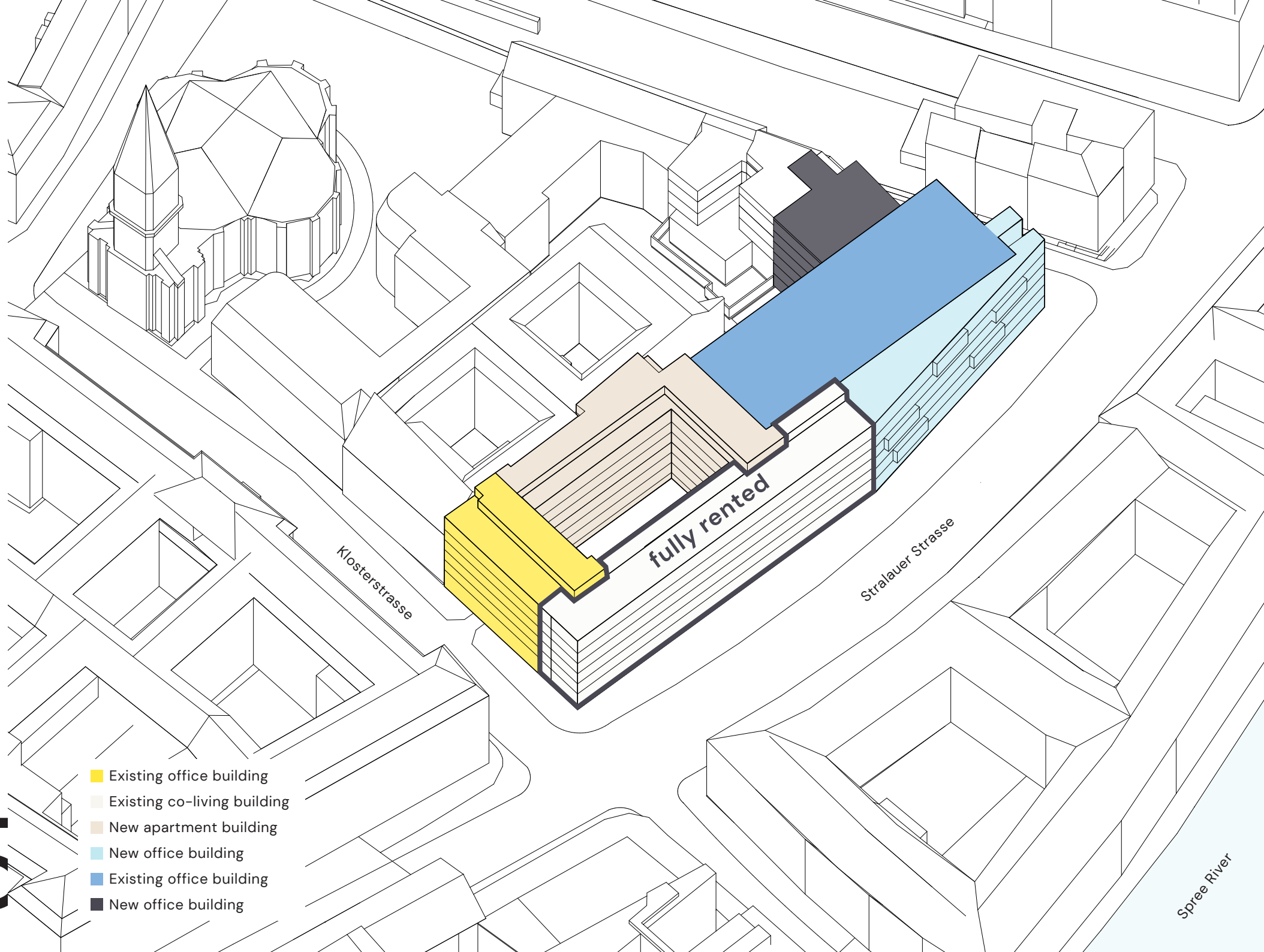


# SIXTY2 – NEW NUMBER IN AN OLD NEIGHBORHOOD

Sixty2 is located within sight of the Rotes Rathaus city hall, the city's political center, and in one of Berlin's oldest streets. Behind the house number 62 is a new, prestigious place to work, sleep, and live.

It is one of the top addresses in the capital city thanks to a visionary transformation of existing office space and a new apartment building by renowned Tchoban Voss architects.

The large-scale building complex was originally constructed in 1975 and, with its timeless elegance, provides a stylish foundation for its current role as the focal point between Berlin-Mitte and the Mediaspree.



- Existing office building
- Existing co-living building
- New apartment building
- New office building
- Existing office building
- New office building



# AMIDST BERLIN MITTE

Sixty2 on Klosterstrasse 62 is located in the middle of the economic merger of Gendarmenmarkt, Alexanderplatz and the Mediaspree. A perfect symbiosis of all the factors that define Berlin: political center, start-up hub and cultural metropolis.

Klosterstrasse has always played a central role: it is one of the oldest streets in the Berlin-Mitte district. The name goes back to the Graues Kloster, a former Franciscan monastery with a socio-political function. The street is also named after the monastery quarter, where numerous architectural monuments are located – and it is framed by representative buildings such as the Old City Hall, the Parochial Church as well as the Dutch Embassy. Only a few steps away is the Rolandufer, a promenade with a green strip on the Spree, which connects Klosterstrasse and Mühlendamm with a walkway.

Alexanderplatz and the Nikolaiviertel can be reached by foot in a few minutes. The Klosterstrasse subway station directly in front of the building is connected to Alexanderplatz, which is one of the most important Berlin shopping locations and a central hub of the public transportation system.





- **Food & Drinks**
- 1 Five Guys
- 2 Starbucks
- 3 Burgermeister
- 4 Tapas Berlin El Colmado
- 5 Ristorante Piazza Rossa
- 6 Fischer & Lustig
- 7 Café & Crêperie
- 8 Zum Nußbaum
- 9 Cyclo
- 10 Tigertörtchen
- 11 Zur letzten Instanz
- 12 The Social Hub
- 13 The Greens
- 14 Ännchen von Tharau





# MAKEOVER OF MODERNITY

The West Building is receiving a comprehensive makeover through a renovation and reconstruction of the interior spaces as well as an expansion through a new building. With the extension of the areas into the inner courtyard and the addition of a stacked storey, an area of 7,200 m<sup>2</sup> is being created for a wide variety of uses.

A lively new courtyard design, sustainable greenery and opening the ground floor to the city center will provide space for culinary concepts and will ensure even more quality of life.

# FACTS

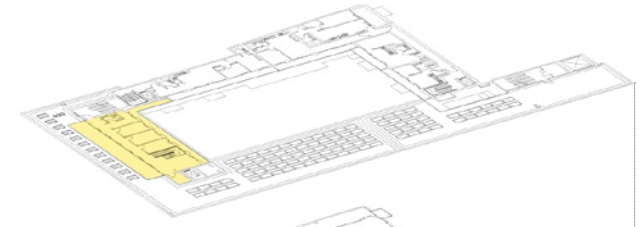
- An existing building of Eastern modernist architecture with architectural highlights
- Revitalisation & expansion of the existing building instead of demolition for a positive sustainability balance
- Visionary transformation of office spaces
- Design by the renowned architects Tchoban Voss
- Flexible floor plans from approx. 320 m<sup>2</sup> to 1,750 m<sup>2</sup>
- Expansion according to tenant requests
- New residential building in the green courtyard with generous glass fronts and balconies
- Central location in Berlin-Mitte



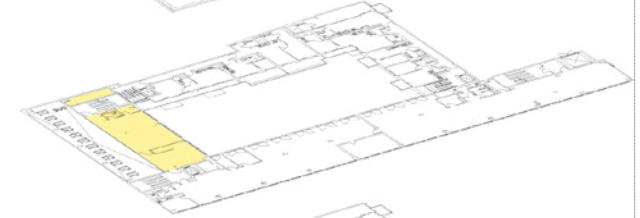


Visualization: Office with gallery floor

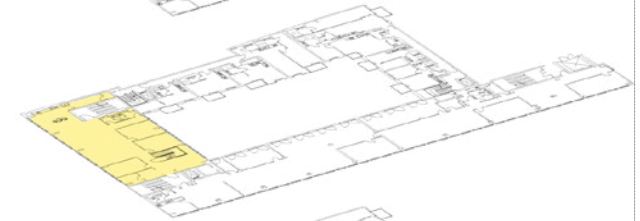
6<sup>th</sup> floor  
220 m<sup>2</sup>



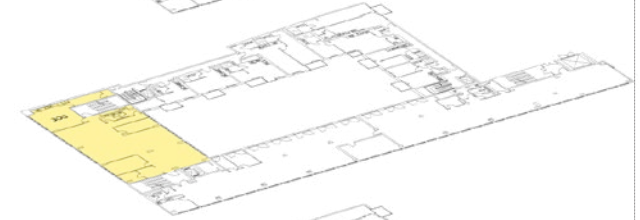
5<sup>th</sup> floor  
170 m<sup>2</sup>



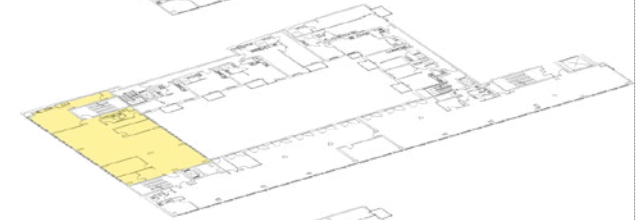
4<sup>th</sup> floor  
340 m<sup>2</sup>



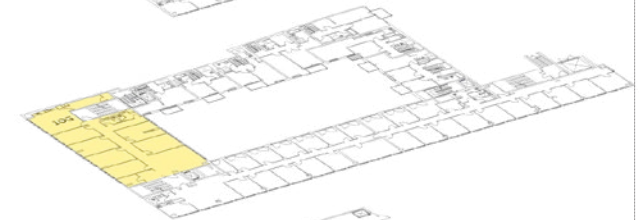
3<sup>rd</sup> floor  
350 m<sup>2</sup>



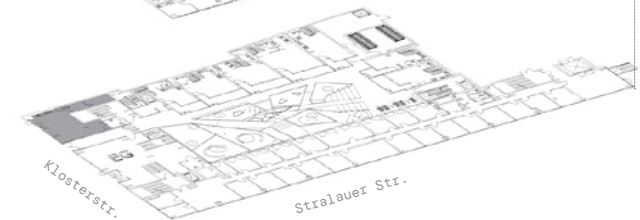
2<sup>nd</sup> floor  
350 m<sup>2</sup>



1<sup>st</sup> floor  
320 m<sup>2</sup>



GF  
90 m<sup>2</sup>



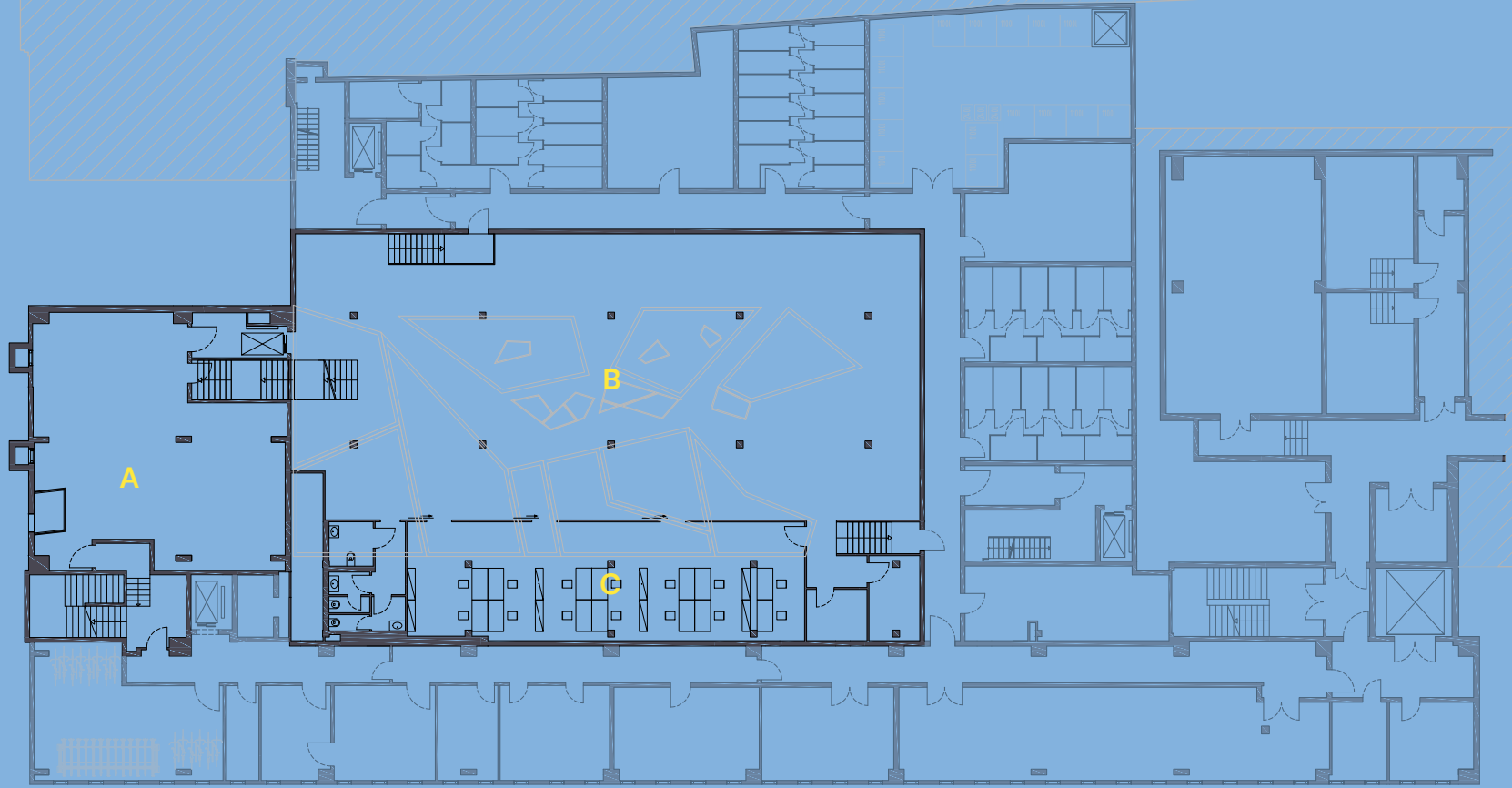
# LOWER LEVEL

- Open floorplan with gallery
- Ceiling height: approx. 4 metres
- Large skylights

A Lobby

B Gallery space

C Seminar room





Visualization: Gallery space with skylights

# STANDARD FLOOR

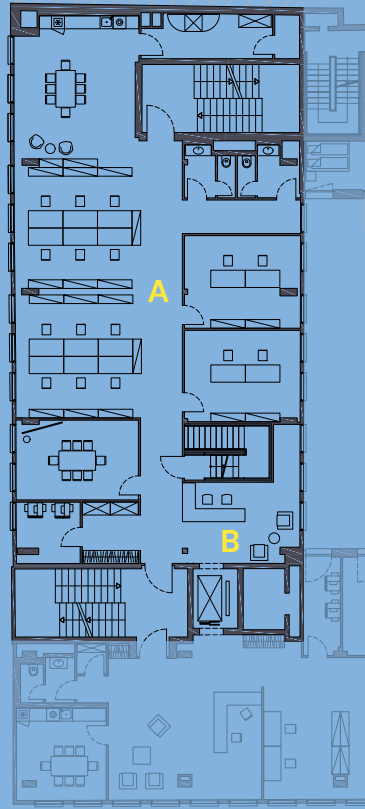
- approx. 320-350 m<sup>2</sup> lettable space
- Mixture of existing and new buildings
- Expansion according to tenant requests

A Kitchenette    C Meeting room  
B Reception    D Open office

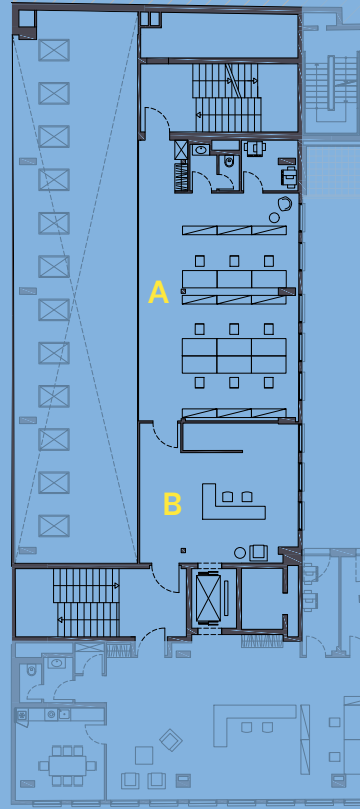




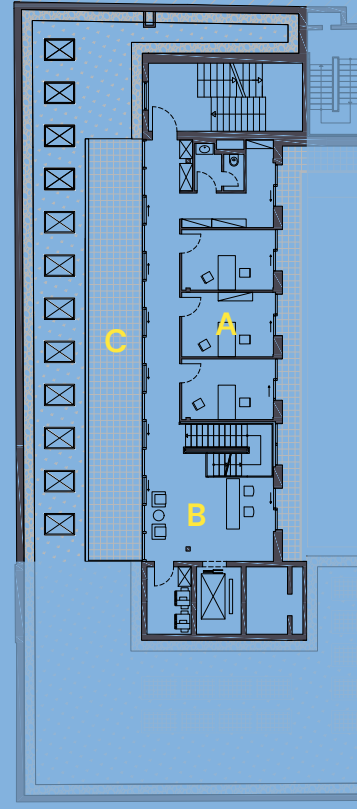
Visualization: Office with open space



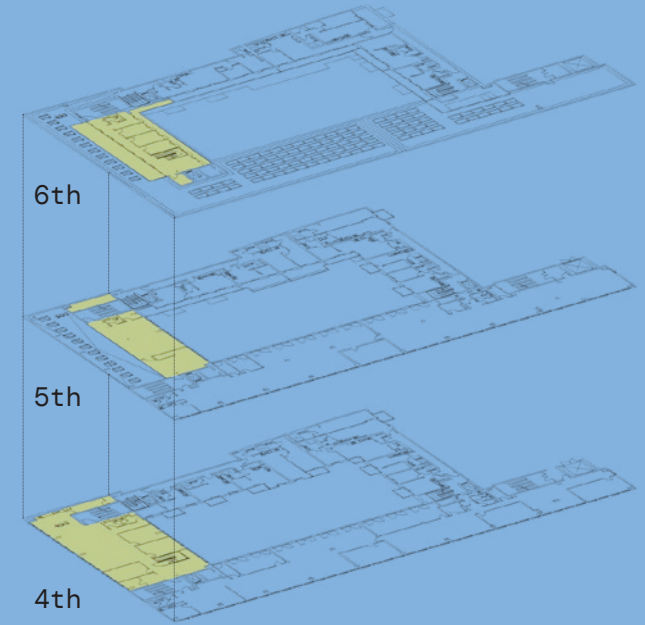
4<sup>th</sup> floor  
approx. 340 m<sup>2</sup>



5<sup>th</sup> floor  
approx. 170 m<sup>2</sup>



6<sup>th</sup> floor  
approx. 220 m<sup>2</sup>



Building overview

# STAGGERED FLOOR

- approx. 730 m<sup>2</sup> total lettable space
- Flexible floorplan
- Spacious terrace

A Office

B Reception

C Terrace





Visualization: Staggered floor with terrace



In a world which is becoming increasingly transient it is only enduring architecture which can meet the ever-changing requirements. Architecture which is valuable, aesthetic, and user-friendly can age gracefully and contribute to an authentic and livable environment.

To this end, we place great importance on innovative and precise solutions at each step of the planning and construction process.

- *The architects  
Sergei Tchoban  
& Ekkehard Voss*



# KONTAKT

Lara Schlesinger

Project Manager

+49 174 9047790

[l.schlesinger@trockland.com](mailto:l.schlesinger@trockland.com)

**CREATING  
UNIQUE  
SPACES  
WITH LOVE**



[sixty2.berlin](https://sixty2.berlin)

**TROCKLAND®**

Trockland Management GmbH

Hauptstrasse 27 | Aufgang E | 10827 Berlin

+49 30 2363137-0 | [trockland.com](https://trockland.com)



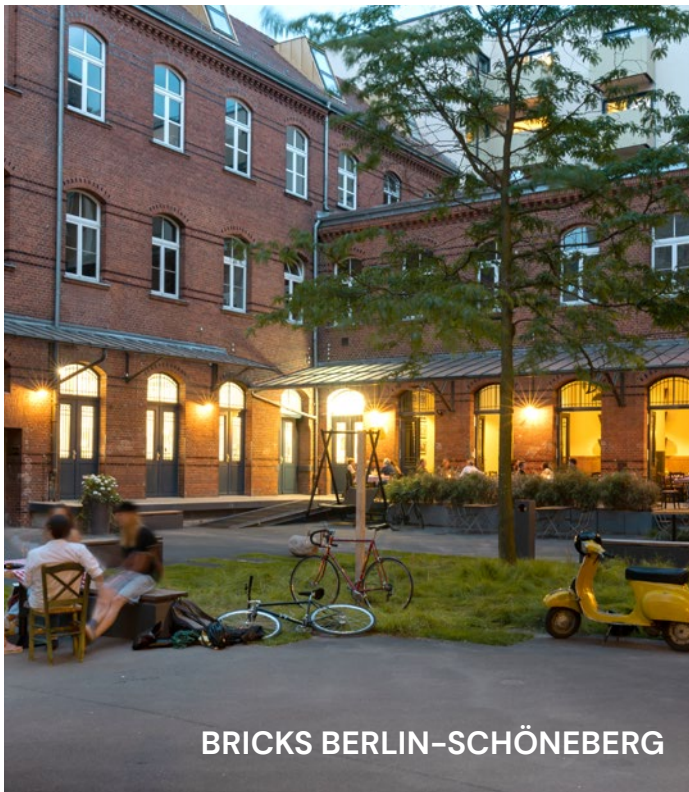
EISWERK BERLIN



PIER 61|64

# TROCKLAND

Established in 2009 in Berlin, Trockland Management GmbH aims to contribute to urban development by creating spaces with a high quality of life. The owner-managed company realizes large-scale new construction projects as well as conversion and reconstruction of residential and commercial properties. The portfolio includes 23 assets – realized and in planning phase – among them assets such as PIER 61|64 at the East Side Gallery and EISWERK in Berlin-Mitte. An international team of 65 professionals strives to create sustainable value while respecting social and ethical values, as well as to provide letting and management services for the portfolio properties.



BRICKS BERLIN-SCHÖNEBERG



CHARLIE LIVING

# TROCKLAND DISCLAIMER

This information does not purport to comprise a full description of the property for any kind of investment nor to include all information that could be of interest to potential investors for such a decision. This information does not replace the need for the recipient to examine the potential investment of the property. Neither does it represent an offer to invest in the property. Neither this document nor the information contained in this document may be used as a basis for contracts, obligations or similar.

No express or implied guarantees or undertakings are given for the correctness, completeness and up-to-datedness of the information, figures, assessments and projections in this document or in any other written or verbal information provided to the recipient. Trockland Management GmbH (including all Trockland companies owning real estate property) its managing directors, officers and employees do not accept any liability in this respect.

This information must be treated confidentially and must not at any time be copied, reproduced or forwarded to other parties (as a whole or in parts) without the prior written consent of Trockland Management GmbH. Neither Trockland Management GmbH nor the Trockland company owning the property shall be obliged to grant the recipient access to any further information, to update the information presented in this document or to correct information that proves to be incorrect during the course of the lease process. Layouts, plans, views and features are based on information and data that may vary in the different planning stages. Visualizations are artistic illustrations that do not necessarily reflect the actual future setting. Potential investors are recommended to compile and evaluate their own information with regard to the properties and the investment which is the content of this presentation. It is recommended that every potential investor who is

interested in purchasing or valuing the investment and the properties should appoint their own financial advisors or other professional consultants.

Copyright photos & renderings:

Trockland, Tchoban Voss Architekten, Adobe Stock, unsplash

A Project by

**TROCKLAND®**

