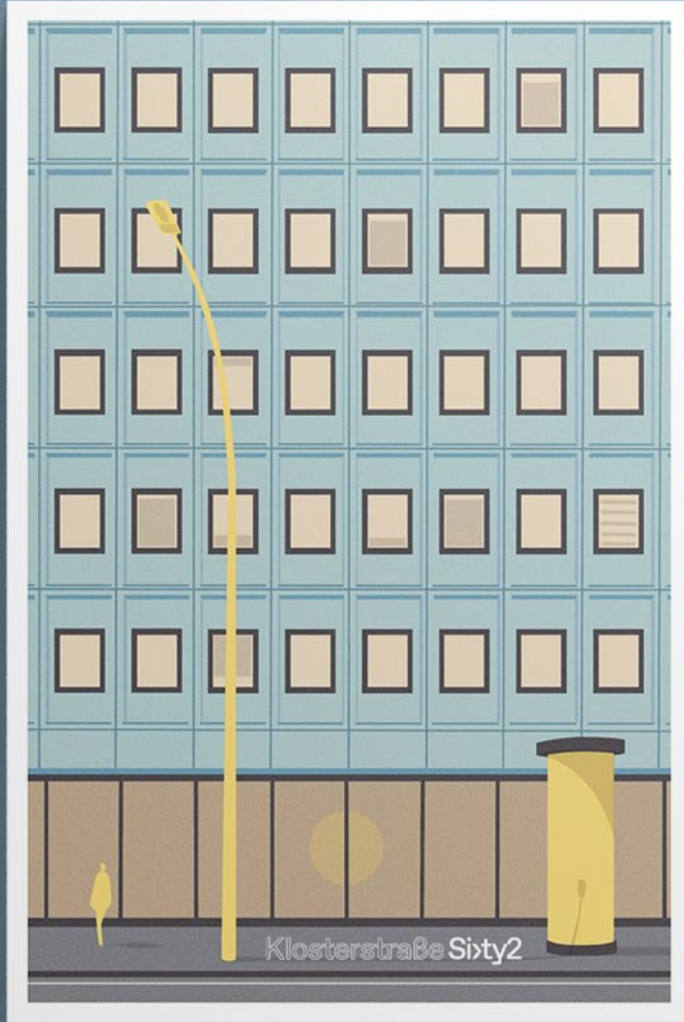




# CONTEMPORARY LIVING

Modern apartments  
in Berlin-Mitte

Klosterstraße Sixty2



A Project by

**TROCKLAND®**

**CREATING**

**UNIQUE**

**SPACES**

**WITH LOVE**

# CONTENT



RENTAL  
APARTMENTS

03

01

WORK & LIFE  
REIMAGINED

COMMUNITY  
LIVING

04

CENTRAL  
LOCATION

02





# WORK & LIFE REIMAGINED

Sixty2 is located in Berlin-Mitte – within direct view of the Rotes Rathaus city hall. It ranks among the top addresses in the capital city thanks to a visionary transformation of existing office space and a new apartment building by renowned architects Tchoban Voss.

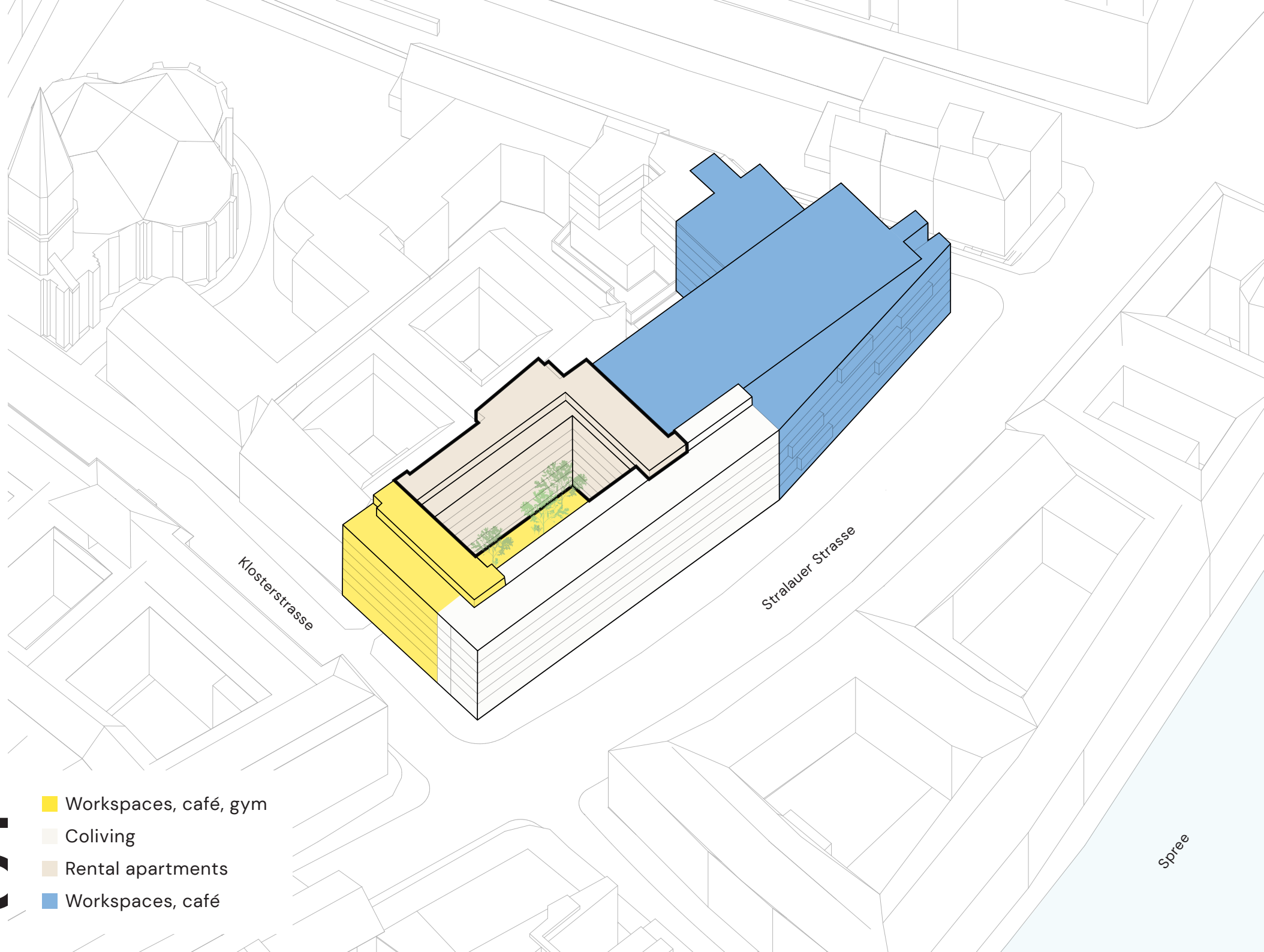
Here, work and life converge in a vibrant, international community hub – seamlessly connected to Berlin's urban landscape and beyond.

For the next generation of urban professionals, Sixty2 offers more than just a home – it's a lifestyle rooted in creativity, connection, and cultural diversity.

# Klosterstraße Sixty2

# C1

- Workspaces, café, gym
- Coliving
- Rental apartments
- Workspaces, café



Klosterstrasse

Stralauer Strasse

Spree



# AMIDST BERLIN- MITTE

Klosterstrasse has always played a central role – it is one of the oldest streets in Berlin-Mitte. The name originates from the “Grey Monastery,” a former Franciscan monastery of social and political significance. The street is also named after the surrounding Klostersviertel, which is home to numerous historic landmarks. It is framed by prominent buildings such as the Old Town Hall and the Dutch Embassy.

A short walk away is the Rolandufer – a green promenade along the Spree that connects Klosterstraße to Mühlendamm via a pedestrian path. Alexanderplatz and the charming Nikolaiviertel are within a few minutes’ walk.

The Klosterstrasse subway station directly in front of the building connects to Alexanderplatz – one of Berlin’s main transport hubs – as well as to many other culturally significant locations, including Eberswalder Strasse, Potsdamer Platz, Zoologischer Garten, and the Olympic Stadium.



10 Minuten zu Fuß

Alexanderplatz **U** **S**

Schillingstraße **U**

Klosterstraße **U**

**S>2**

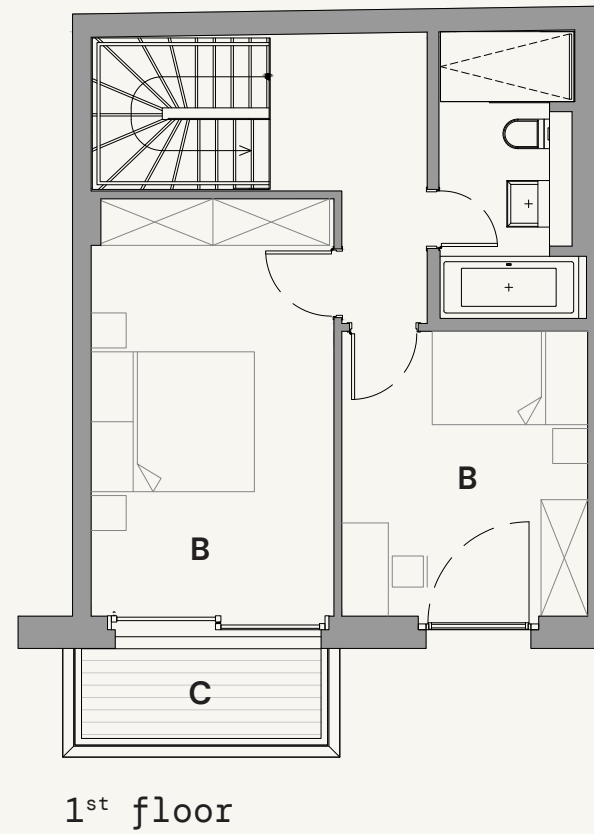
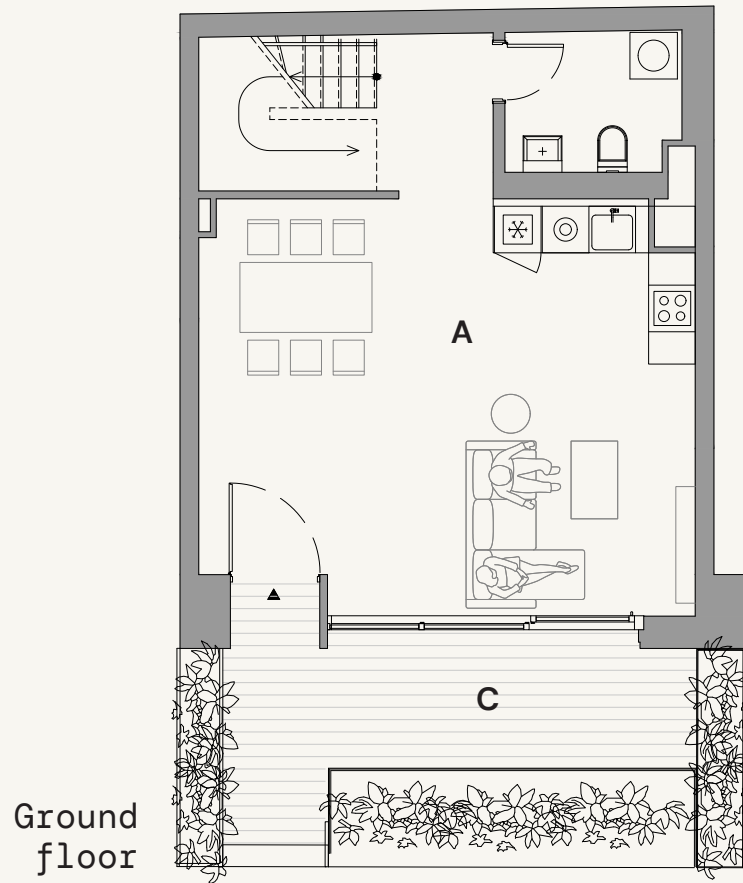
Spree

Jannowitzbrücke **U** **S**

- **Sport & Activities**
  - 1 Balance Reformer Pilates
  - 2 Immersive Gamebox
  - 3 BEAT81 Cycle Studio
  - 4 SuperFit Mitte
  - 5 ALEXA
  - 6 Nikolaiviertel
  - 7 Museumsinsel
  - 8 Rolandufer & Schleuse
  - 9 In-house gym

- **Food & Drinks**
  - 1 Five Guys
  - 2 Starbucks
  - 3 Burgermeister
  - 4 Tapas Berlin El Colmado
  - 5 Ristorante Piazza Rossa
  - 6 Fischer & Lustig
  - 7 Café & Crêperie
  - 8 Zum Nußbaum
  - 9 Cyclo
  - 10 Tigertörtchen
  - 11 Zur letzten Instanz
  - 12 The Social Hub
  - 13 The Greens
  - 14 Ännchen von Tharau
  - 15 Calli. the coffee club
  - 16 Kaffeekirsche





# MAISONNETTES

Ground floor & 1<sup>st</sup> floor  
approx. 77-130 m<sup>2</sup>

- Townhouse-feel on two bright levels
- A smart layout for modern living
- Garden access within the city

A Living & dining    B Bedrooms    C Outdoor space

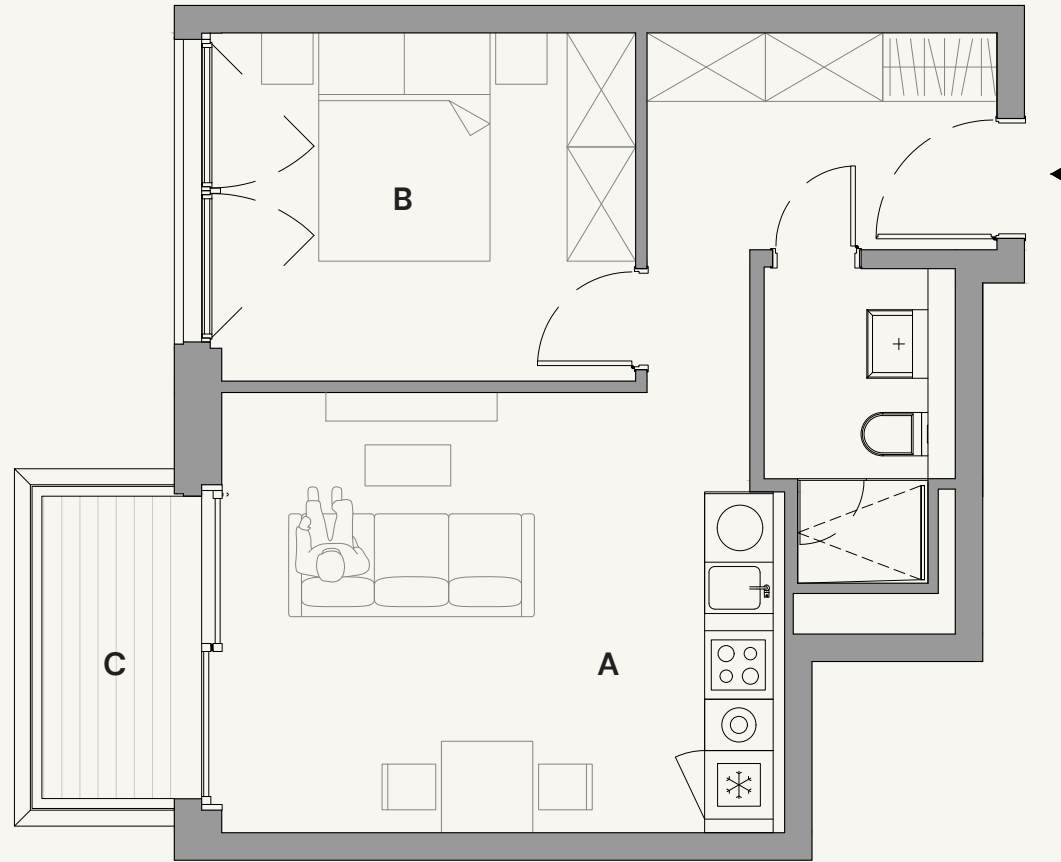




Maisonette apartment with townhouse-feel

# STUDIOS

2<sup>nd</sup> to 5<sup>th</sup> floor  
approx. 34 m<sup>2</sup>



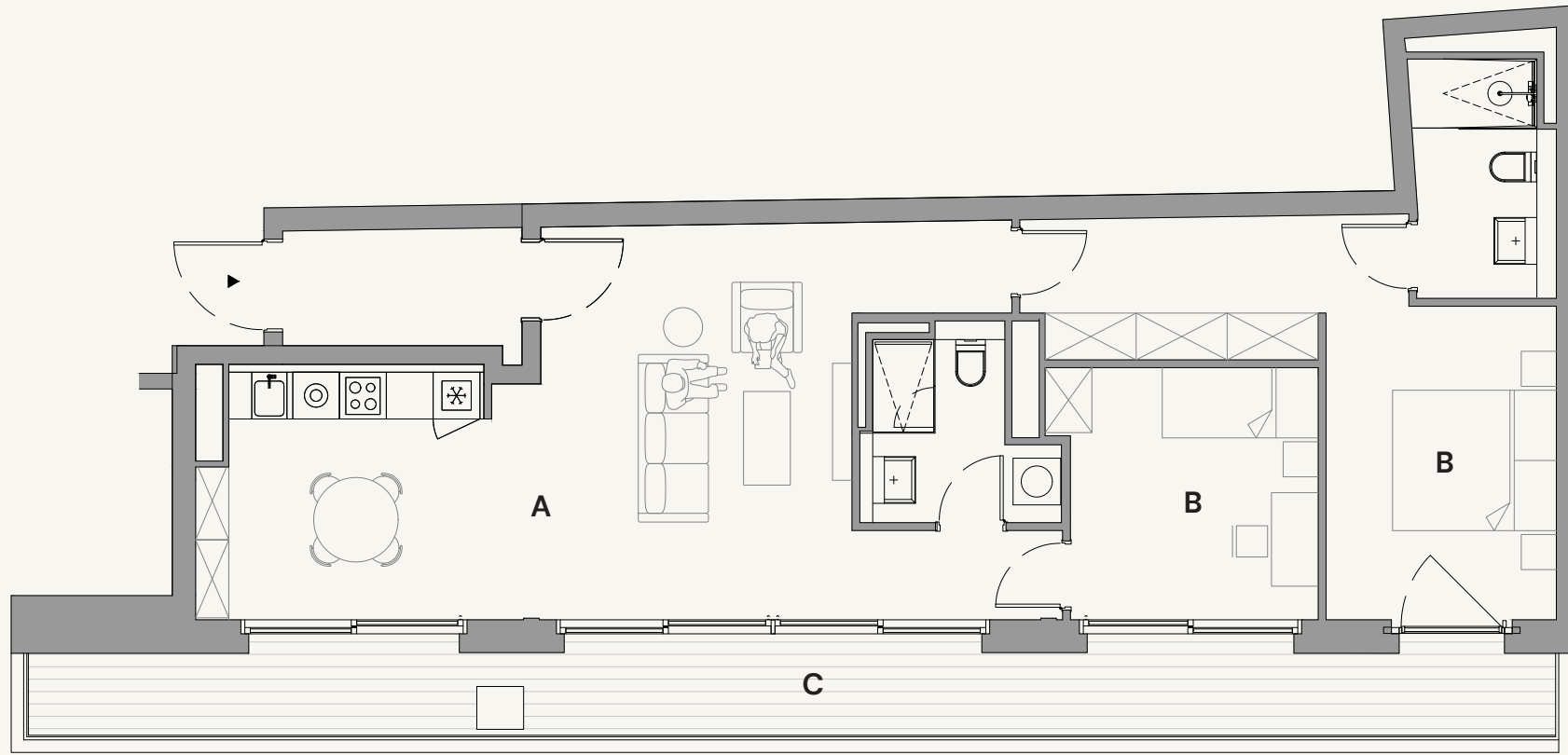
- Bright interior with floor-to-ceiling windows
- Smart and cozy layout for living, dining, and sleeping
- Balcony facing the green courtyard

A Living & dining    B Bedroom    C Balcony





Studio with a compact layout



# PENTHOUSES

6<sup>th</sup> floor

approx. 39-92 m<sup>2</sup>

- Open kitchen and living area
- Master bedroom with en-suite bathroom
- Spacious terrace overlooking the green courtyard

A Living & dining    B Bedrooms    C Terrace





Penthouse with open-plan layout and floor-to-ceiling windows



# COMMUNITY LIVING

Sixty2 is redefining what it means to live in the middle of Berlin. A key element for all residents and tenants is the “people@Sixty2” community, which offers a wide range of activities. The events are organised by the community itself and bring the neighbourhood together – activities include, for example, events that bring the neighbourhood together, as well as joint activities and workshops where the community can exchange knowledge, skills and experiences.

This space will soon host a café by Kaffeekirsche Berlin, known for its exceptional coffee culture – a perfect spot for residents and visitors alike to meet, unwind, or work. The operators of an innovative fitness concept will open their first studio in Berlin

Sixty2 brings together innovative architecture, urban vibrancy, and a spirit of connection – creating a place to live, stay, and belong.



# CONTACT

Luciana Amaral

Letting Manager  
l.amaral@trockland.com  
+49 1590 6782827

**CREATING  
UNIQUE  
SPACES  
WITH LOVE**



sixty2.berlin

**TROCKLAND®**

Trockland Management GmbH  
Hauptstraße 27 | Aufgang E | 10827 Berlin  
+49 30 2363137-0 | trockland.com



CHARLIE LIVING



PIER 61|64



COE48



MUSEUM FÜR ARCHITEKTURZEICHNUNG

# TROCKLAND

Established in 2009 in Berlin, Trockland Management GmbH aims to contribute to urban development by creating spaces with a high quality of life. The owner-managed company realizes large-scale new construction projects as well as conversion and reconstruction of residential and commercial properties. The portfolio includes 23 assets – realized and in planning phase – among them assets such as PIER 61|64 at the East Side Gallery and EISWERK in Berlin-Mitte. An international team of 65 professionals strives to create sustainable value while respecting social and ethical values, as well as to provide letting and management services for the portfolio properties.

# TCHOBAN

# VOSS

With over 150 highly qualified, interdisciplinary employees and many years of experience, it offers architecturally and functionally sustainable solutions for a wide range of building projects in Germany and abroad.

# TROCKLAND DISCLAIMER

This information does not purport to comprise a full description of the property for any kind of investment nor to include all information that could be of interest to potential investors for such a decision. This information does not replace the need for the recipient to examine the potential investment of the property. Neither does it represent an offer to invest in the property. Neither this document nor the information contained in this document may be used as a basis for contracts, obligations or similar.

No express or implied guarantees or undertakings are given for the correctness, completeness and up-to-datedness of the information, figures, assessments and projections in this document or in any other written or verbal information provided to the recipient. Trockland Management GmbH (including all Trockland companies owning real estate property) its managing directors, officers and employees do not accept any liability in this respect.

This information must be treated confidentially and must not at any time be copied, reproduced or forwarded to other parties (as a whole or in parts) without the prior written consent of Trockland Management GmbH. Neither Trockland Management GmbH nor the Trockland company owning the property shall be obliged to grant the recipient access to any further information, to update the information presented in this document or to correct information that proves to be incorrect during the course of the lease process. Layouts, plans, views and features are based on information and data that may vary in the different planning stages. Visualizations are artistic illustrations that do not necessarily reflect the actual future setting. Potential investors are recommended to compile and evaluate their own information with regard to the properties and the investment which is the content of this presentation. It is recommended that every potential investor who is

interested in purchasing or valuing the investment and the properties should appoint their own financial advisors or other professional consultants.

Copyright photos & renderings:

Trockland, Tchoban Voss Architekten, Adobe Stock, unsplash, BTTR, Roland Halbe, Klemens Renner

A Project by

**TROCKLAND®**

